

NACEXpharma Service



Delivery with **temperature monitoring/control** to hospitals, clinics, laboratories, pharmacies, parapharmacies and distributors with **physical and thermal traceability chart per package**, according to our **Premium** services.

COMMITMENT Services with guaranteed delivery*

- Before 8:30 am
- Before 10 am
- Before 12 pm
- Saturday delivery



MAINTENANCE OF TEMPERATURE CONDITIONS <25°C

(5°C-25°C / 15°C-25°C)
Control/monitoring in Facilities (Platforms) and Vehicles with probes calibrated annually by ENAC certified laboratory.

TRACEABILITY BY PACKAGE

Online and ontime of all shipments (thermal, physical, visual) from collection to delivery.

THERMAL TRACEABILITY

Using probes located, according to thermal mapping, throughout our transport network.

INFORMATION Custom KPIs

Online access to individual **temperature charts** per package.

VALIDATION-QUALIFICATION

- Service.
- IT system (management of the physical and thermal traceability of the shipment).
- Facilities and vehicles.

SECURITY

Vehicles geolocated using GPS and security systems.
Facilities with video surveillance and access control.

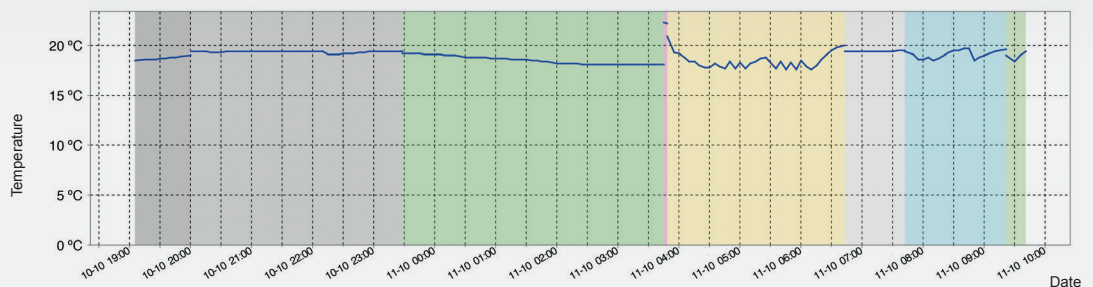
ALARMS

- Parameterization by customer.
- Online and ontime notification.
- Option of blocking the shipment before delivery.

T.Min. Total 17,60°C (1')		T.Max. Total 22,30°C (1')		MKT. Total 18,92°C	
Límite Superior			Límite Inferior		
Tª > L.Sup1	Tª > L.Sup2	Tª > L.Inf1	Tª > L.Inf2	Tª > L.Inf3	
0°	0°	0°	0°	0°	

Estado	Punto	Sonda	Entrada	Salida	T.Min	T.Máx

Thermal traceability chart of a package



* In provincial capitals and towns of more than 100,000 inhabitants on mainland Spain. In Portugal, service available in Lisbon and Porto. Other towns and cities, check with your franchise.

• NACEXpharma Extend Service for deliveries in towns of less than 100,000 inhabitants.

• The customer must sign a Technical Agreement for any Pharma service.